

OMERO: Upload Data

- Download the OMERO.insight client for your operating system; You can find it at: <https://www.openmicroscopy.org/omero/downloads/>

After downloading and installing OMERO.insight, you can start the application. You can follow the instruction step by step and import your desired Data into OMERO.

OME ABOUT US NEWS PRODUCTS SUPPORT DOCS EXPLORE

OVERVIEW DOWNLOADS SCIENTISTS DEVELOPERS INSTITUTIONS FEATURES

OMERO 5.6 Downloads

Read The Release Announcement

[Read the Docs](#)

OMERO clients

A standard OMERO user just needs to download the client package with a compatible version for their institutional server (e.g. 5.5.8 clients will connect to 5.6.0 servers but not to 5.4.0 servers). Full instructions for installation are on the [guides](#).

If you do not have an institutional server, you can take advantage of the OMERO platform hosted by the OME team in Dundee and sign up for a free demo account at <https://demo.openmicroscopy.org/signup/>. You will received an email with your username and password allowing you to connect to the server in Scotland.

Windows

OMERO.insight-5.5.17.exe

Download (119 MB)

OMERO.insight-5.5.17.msi

Download (147 MB)

Mac OS X

OMERO.insight-5.5.17.dmg


Download (142 MB)

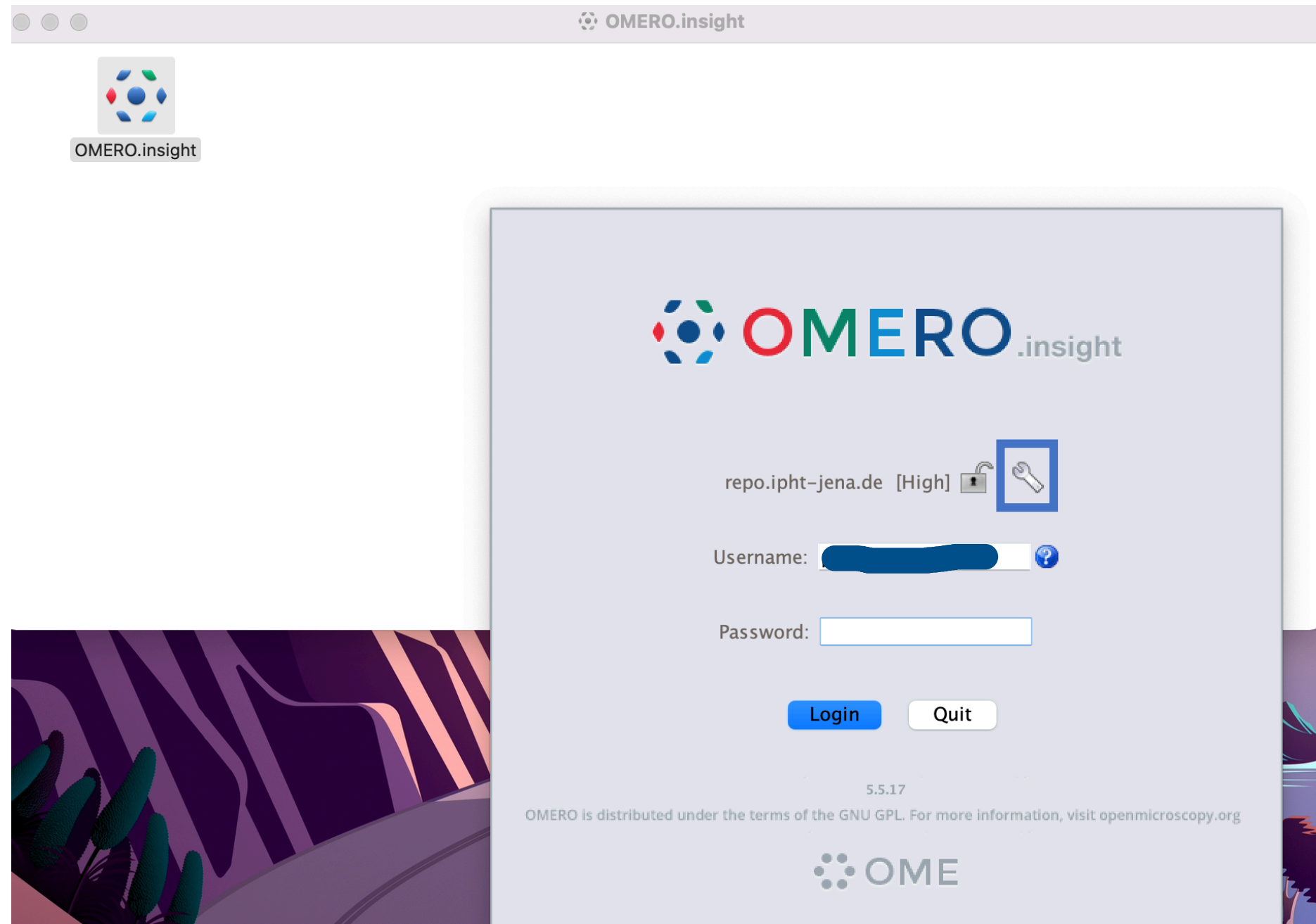
Linux

OMERO.insight-5.5.17.zip

Download (74 MB)

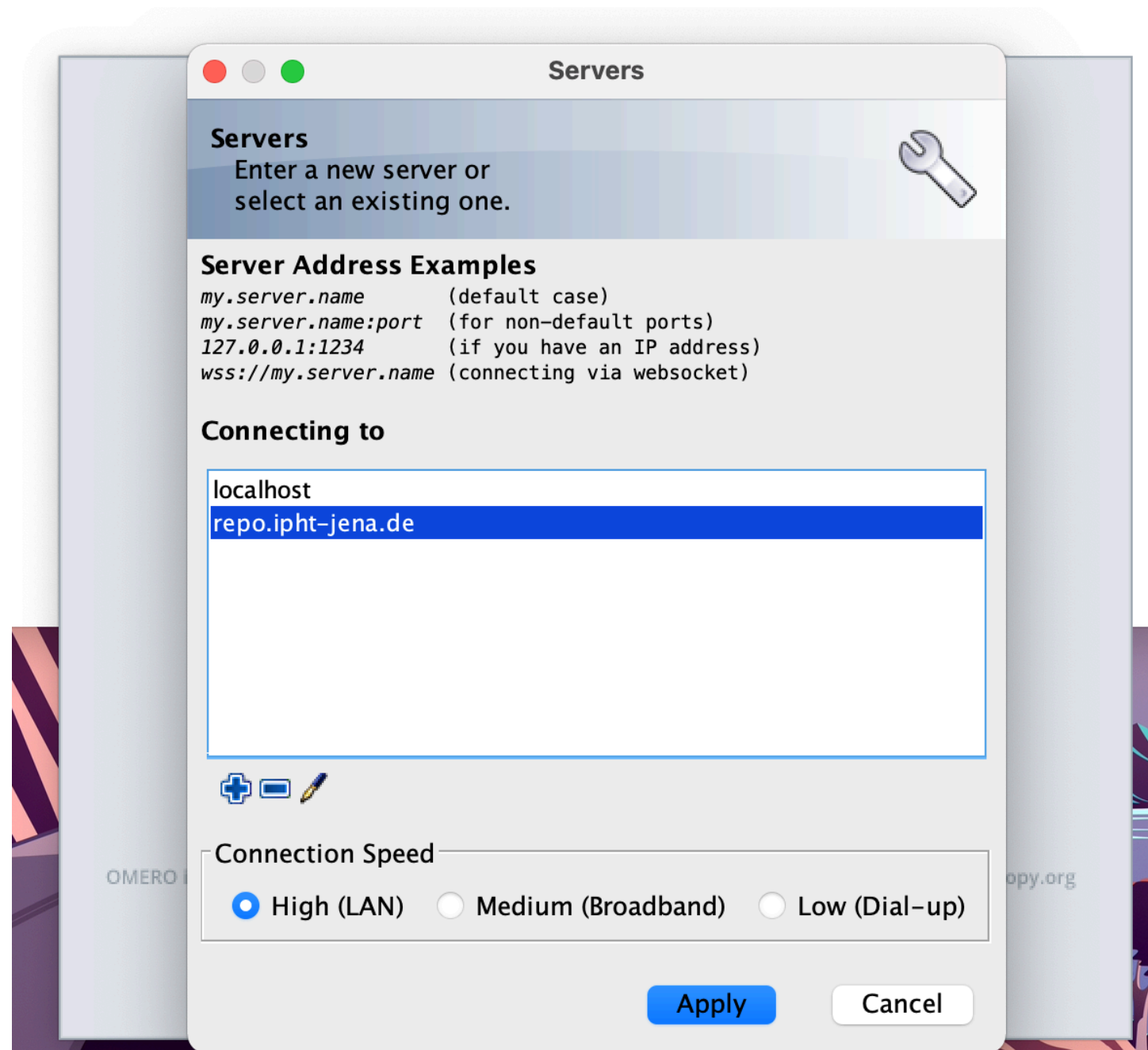
Instruction step by step

- Open OMERO.insight and click on the wrench icon .



Instruction step by step

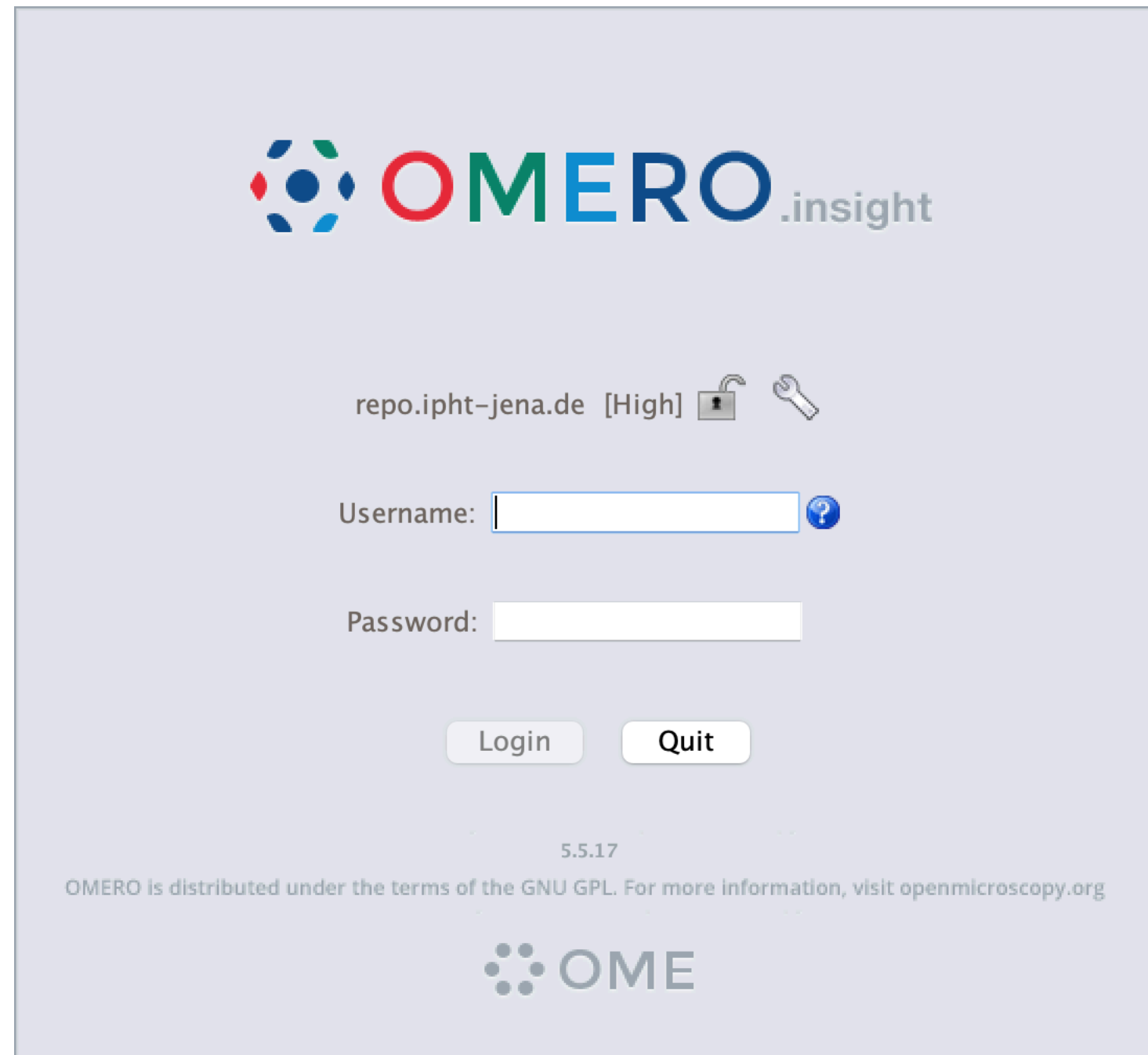
- This will show you the list of existing servers to which you can connect. Or you can click on the plus button and add a new line and type the server address.



When done, simply click Apply.

Instruction step by step

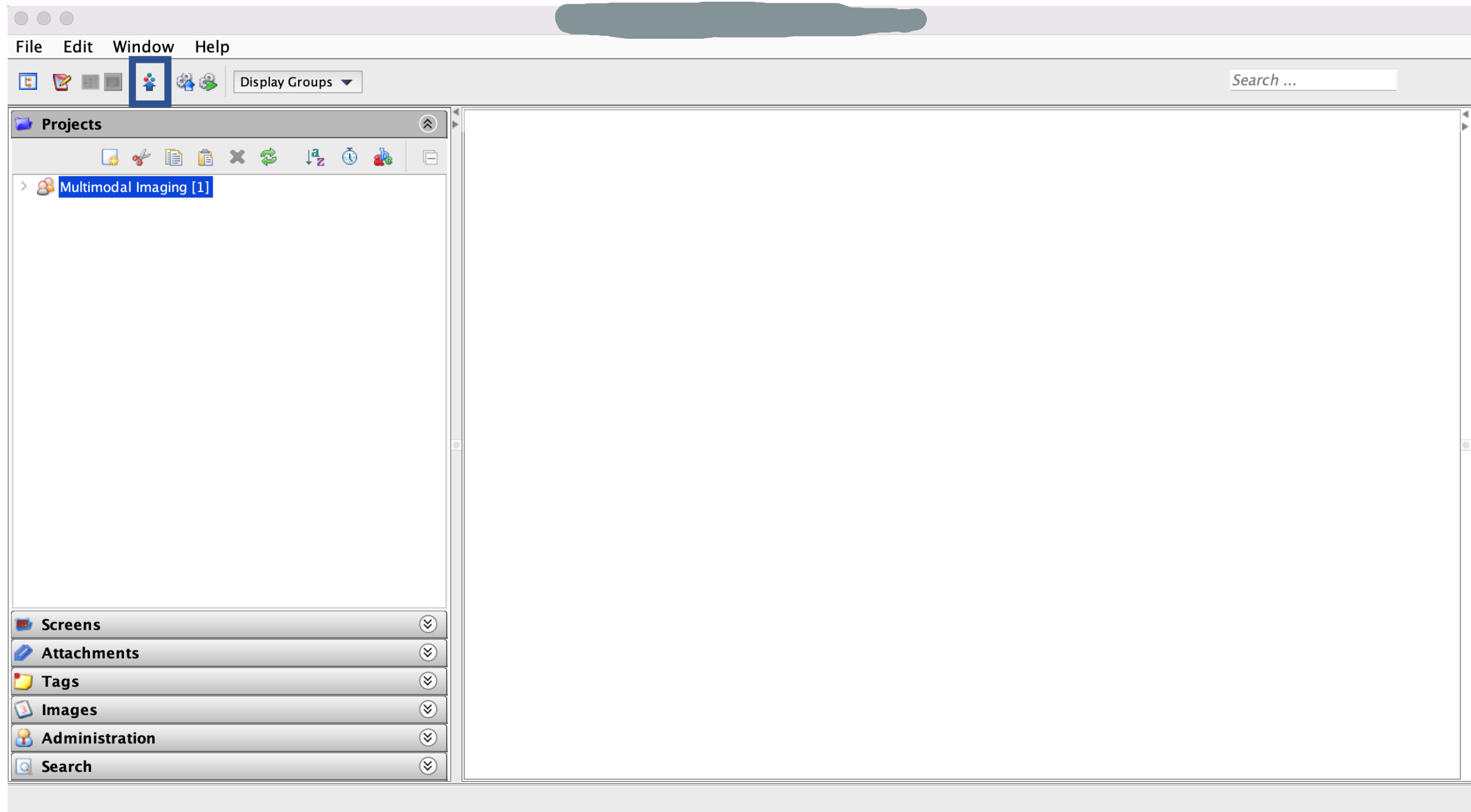
- Login with provided Username and Password.



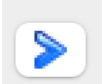
The screenshot shows the OMERO.insight login page. At the top center is the OMERO.insight logo, which consists of a colorful circular icon followed by the text "OMERO.insight". Below the logo, the repository name "repo.ipht-jena.de [High]" is displayed with a lock icon and a key icon. Underneath, there are two input fields: "Username:" followed by a text box and a question mark icon, and "Password:" followed by a text box. Below the input fields are two buttons: "Login" and "Quit". At the bottom of the page, the version number "5.5.17" is shown, followed by the text "OMERO is distributed under the terms of the GNU GPL. For more information, visit openmicroscopy.org". At the very bottom center is the OME logo.

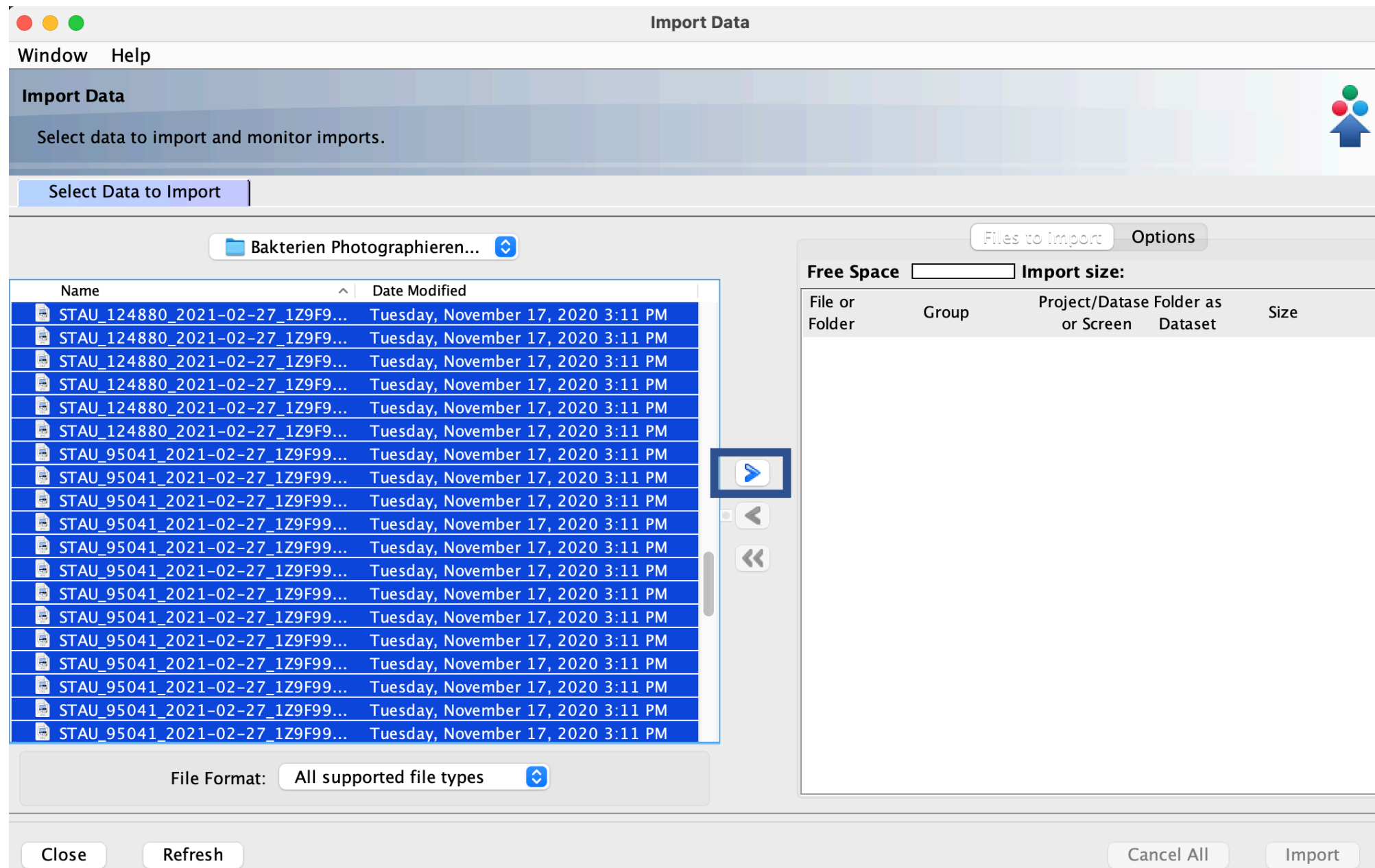
Instruction step by step

- In OMERO.insight click on the importer icon  .



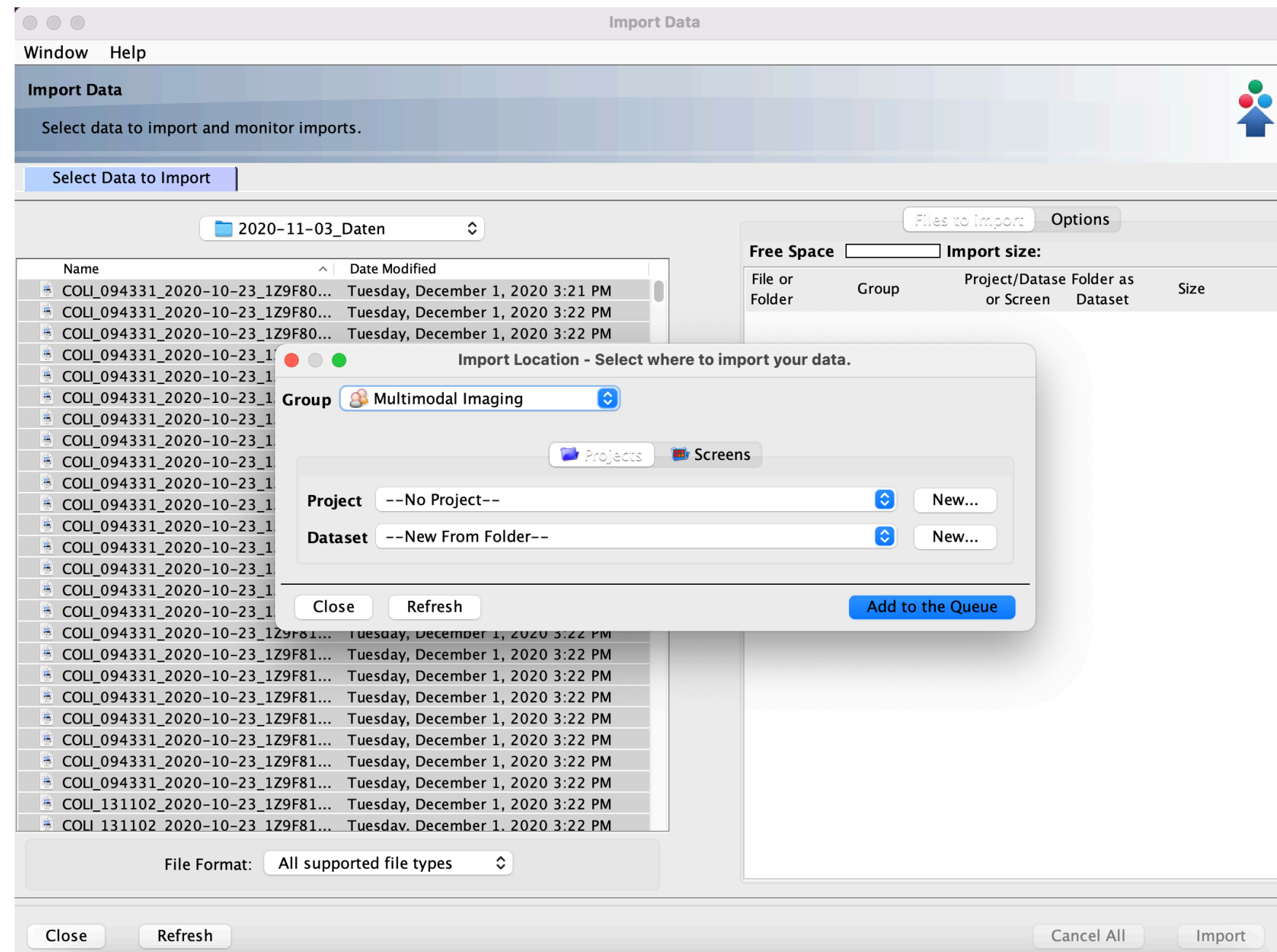
Instruction step by step

- Brows your local hierarchy on the left, select a single image or a folder of images and add to the Queue by clicking on the  icon.



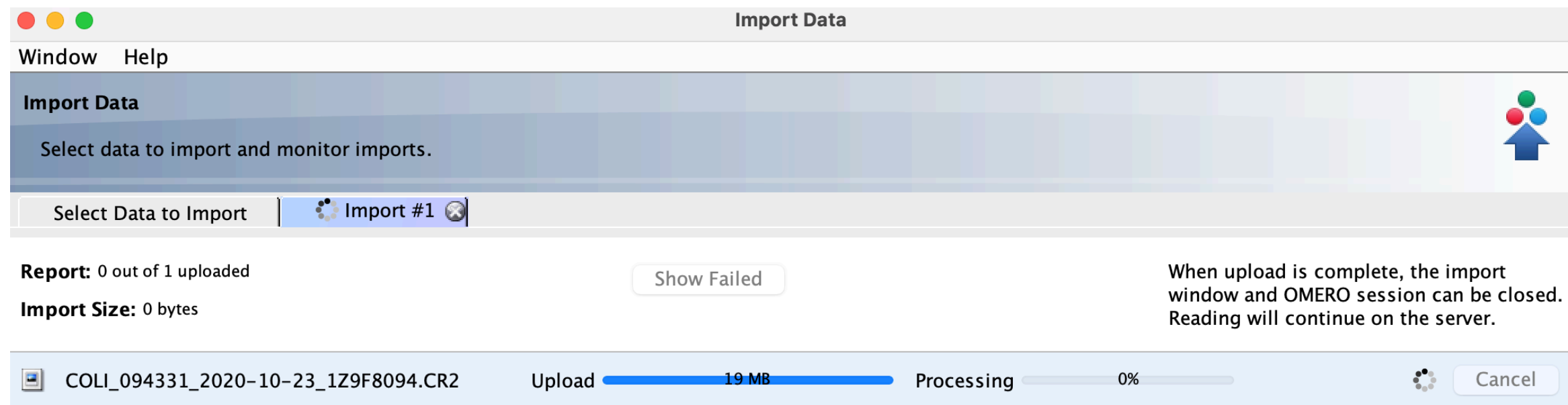
Instruction step by step

- Create a standardised hierarchy of **Project/Dataset/Images**, in which image thumbnails can be viewed. You can add your data to the existing Projects or Dataset or create new ones and add to the queue.




Instruction step by step

- After clicking on the import button in the importer window, two progress bar for each image can be seen, Upload and Processing.



Instruction step by step

- When importing images were finished, now you can go back either to the OMERO.insight main window or OMERO.web, refresh the tree using  icon. Now you can see the imported images inside the Dataset and/or Project which has been already specified.

